



Building Strong Connections

---

FAMILY PROGRAMS HAWAII

---



**HELP US HELP KIDS**





## Mission

---

***To strengthen youth and families in the child welfare system through high quality preventive and support services.***

Family Programs Hawai'i believes in putting children first and working within the family to achieve a caring, loving, environment in which Hawai'i's children can thrive and succeed. We believe that government alone cannot provide all that is needed; therefore we advocate for private-public partnerships to better develop and provide services for children and their families, as well as youth transitioning out of foster care. Our services demonstrate respect and honor for the diverse cultures of our island families.

## Programs and Services

---

We accomplish our purpose by providing programs and services in the following areas:

- **Statewide Resource Families Support Services** — Training, support groups, a warm line and parent-to-parent mentoring.
- **Voluntary Case Management** — Assessment, counseling and assistance for families and children designed to prevent children from entering the Child Welfare System.
- **Ho'omalū O Na Kamali'i** — A receiving home serving as a temporary protection for children removed from their homes because of alleged abuse and/or neglect.
- **Project Visitation** — Monthly visitation for siblings separated by the foster care system.
- **Special Events** — Fun activities enriching the lives of foster children and families, such as the annual picnic and holiday party.
- **Enhancement Grants** — Funds for children in foster care who have been abused and neglected, providing help with items and activities not covered in regular foster care support including tutors, special events, graduation expenses and more.
- **eXcel & Ho'ololi Mua No Ke Ola Senior Program** — Services for high school seniors in foster care preparing them for higher education and vocational training.
- **Long Term Foster Care** — Ongoing foster care for youth in Honolulu and Hilo including those transitioning out of foster care.
- **Respite Program** — Provides families with a break from the ongoing responsibility of parenting children in out-of-home care.
- **It Takes An Ohana** — Advocacy and empowerment for resource families through information, skills and support.



## Dear Sponsor:

**There is no better investment than helping kids and families.  
Won't you support our mission?**

Thank you for considering sponsorship of Family Programs Hawai'i. As a long-serving board member, I can assure you this agency is worthy of your investment. Children and families in our community are hurting now more than ever, and your contribution has the power to profoundly improve their lives.

Family Programs Hawai'i and its predecessor agencies have been working to support kids and families in the child welfare system for more than twenty years. Since 2004, FPH has worked with children to prevent them from being placed in foster care; supported them in out of home care; helped them successfully transition out of foster care; and provided them with temporary protection when they've been removed from their homes as a result of alleged of abuse and neglect.

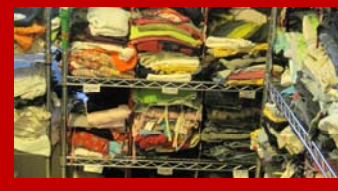
FPH collaborates with local government, social service agencies, corporate sponsors, foundations, individual donors and countless volunteers to deliver a range of services. While government contract revenue can subsidize certain program operations, we depend upon broad public support as well to help fund our current programs and develop innovative new ones. The need is great. The additional support can mean the difference between a child having a loving home or not, a healthy family or a broken one. It can literally change a child's future.

We invite you to become a sponsor and be part of the exciting things we're doing. In return, you and your staff will receive visibility and acknowledgement within the agency and throughout the community. You'll have volunteer opportunities and involvement in activities that will garner even more exposure. And because FPH is a registered Hawai'i based non-profit and charitable organization, your donations are tax-deductible. But perhaps the greatest reward of all is how you will feel. No amount of recognition or PR can compare. Rest assured your funds will stay here in Hawai'i and are used wisely. Not only do you have our commitment, but the results of our work will be reported to you on a regular basis.

Family Programs Hawai'i believes in the power of connections — between family members, within foster families, between children and guardians, between the public and private sectors, and between the agency and community volunteers and generous donors. Please join us. Become a sponsor.

Thank you,

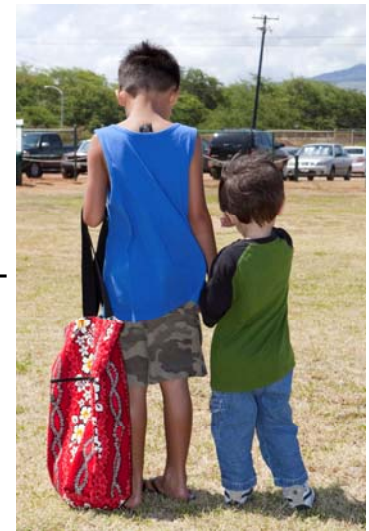
Mike Curtis  
Chairman, Board of Directors



## How Sponsorship Dollars Are Used:

---

- **Seed Money to Start Innovative New Programs** - To improve the quality of service to our foster children and families, we need new “cutting-edge” programs addressing their vital needs, programs addressing their problems and challenges, and programs that make an impact on the community.
- **Youth Empowerment Programs** - Healthy activities and support make a huge difference in the lives of youth in foster care. Without these programs they are at risk of substance abuse, dropping out of school, pregnancy and involvement in other high-risk situations.
- **Events and Enrichment Activities** - Foster youth and families benefit greatly from events such as the annual picnic and holiday party. These events are made possible by FPH in partnership with community businesses, civic organizations and volunteers.
- **Need Based Scholarships** - Foster youth transitioning out of foster care often do not have the necessary family and financial support to continue their education, or find housing or gainful employment. Scholarships provide the boost they need.
- **Clothing, School Supplies and Enhancement Activities** - Children placed in our temporary shelter, Ho‘omalū O Na Kamali‘i, have been removed from their homes because of alleged abuse and neglect. Most often they do not have enough clothes, necessary school supplies, or funds for extra-curricular activities. We make the turbulent transition into their new home more comfortable and nurturing.
- **Volunteer Recruitment, Training and Retention** - Our volunteers truly make a difference in the lives of our children. They are the backbone of FPH programs and services, but it is costly to screen, recruit, train and retain talented volunteers for all of our program needs. Dollars are needed here to keep our volunteer program active.
- **Offset Operating Costs** - The government and private foundation funding we receive for our programs does not cover all of the administrative overhead required to provide these vital services and employ our capable, caring staff. Sponsorship dollars help subsidize these needs.





## Annual Sponsorship Levels

### 'Ohana Sponsor - \$20,000

- Prominent placement on FPH website with hyperlink to your website
- Featured in agency video and collateral material when appropriate
- Name and logo on FPH website donor page
- Virtual table sponsor at the Annual Holiday Party with signage
- Brick with logo and name placed at Ho'omalulu O Na Kamali'i
- Recognition on selected print materials
- Plaque on Donor Wall in the FPH main lobby
- Certificate of Recognition for display in your office
- Sponsor invite to select FPH events and fundraisers
- Banner displayed at program events (Holiday Party & Annual Picnic)
- Mention in FPH Annual Report
- Sponsor listing in newsletter (2,000 copy distribution)

### Hui Sponsor - \$10,000

- Name and logo on FPH website donor page
- Virtual table sponsor at the Annual Holiday Party with signage
- Brick with logo and name placed at Ho'omalulu O Na Kamali'i
- Recognition on selected print materials
- Plaque on Donor Wall in the FPH main lobby
- Certificate of Recognition for display in your office
- Sponsor invite to select FPH events and fundraisers
- Banner displayed at program events (Holiday Party & Annual Picnic)
- Mention in FPH Annual Report
- Sponsor listing in newsletter (2,000 copy distribution)

### Kamali'i Sponsor - \$5,000

- Plaque on Donor Wall in the FPH main lobby
- Certificate of Recognition for display in your office
- Sponsor invite to select FPH events and fundraisers
- Mention in FPH Annual Report

### Keiki Sponsor - \$1,000

- Sponsor invite to all FPH events and fundraisers
- Mention in FPH Annual Report
- Newsletter listing with logo placement (2,000 copy distribution)



## Sponsorship Commitment Form

### Contact Information

Company/Organization \_\_\_\_\_  
 Contact Name \_\_\_\_\_  
 Address \_\_\_\_\_  
 Email \_\_\_\_\_  
 Phone \_\_\_\_\_ Cell \_\_\_\_\_  
 Fax \_\_\_\_\_ Website \_\_\_\_\_

### Sponsorship Type

- \$ 20,000 'Ohana Sponsor  
 \$ 10,000 Hui Sponsor  
 \$ 5,000 Kamali'i Sponsor  
 \$ 1,000 Keiki Sponsor  
 \$ \_\_\_\_\_ Donation Only

### Payment Information

- Check enclosed and payable to Family Programs Hawai'i  
 Visa     MasterCard     American Express  
 Card Number \_\_\_\_\_ Exp \_\_\_\_\_  
 Verification No. \_\_\_\_ (3 digit security code on back of card)  
 Name on card \_\_\_\_\_  
 Signature \_\_\_\_\_

Please include a copy of this form with payment and send to:  
 Family Programs Hawai'i  
 250 Vineyard St.  
 Honolulu, HI 96813-2445

### Questions

For more information or questions please contact:  
 Connie Sizemore, Development Director  
 (808) 540-2534  
 CSizemore@FamilyProgramsHi.org  
 www.FamilyProgramsHawaii.org



## Mahalo From Our Leadership

---

### Officers

**Mike Curtis**, Chairman  
Vice President of Finance  
Commercial Data Systems, Inc.

**Lowell Kalapa**, Treasurer & Vice Chair  
President  
Tax Foundation of Hawaii

**Barbara Campbell**, Vice Chair  
Vice President of Retail Development &  
Leasing  
Outrigger Enterprises Inc.

**Maryellen Markley, Ph.D.**, Vice Chair  
Executive Director  
Hawaii Autism Foundation

**Linda Santos**, President & CEO  
Family Programs Hawai'i

**Selby "Jake" Jacobs**, Chair, Audit Com.

**Mei Nakamoto**  
Attorney at Law  
Law Offices of Mei Nakamoto

**Louis Erteschik, Esq.**  
Attorney  
Hawaii Disability Rights Center

**Daniel T.S. Kim**  
Vice President  
Bank of Hawaii

**J. Lehua Kala'i**  
Administrative Assistant  
Team Clean, Inc.

**Mona Choy-Beddo**  
VP & Retail Banking Regional Manager  
HomeStreet Bank

**Brian Keala Benz**  
President & CEO  
Team Clean, Inc.

**Catherine M. Kissel**  
Community Volunteer

**Kevin Dayton**  
Executive Assistant  
Office of the Mayor

---

### Voting Members

**Glenn Perry**  
Realtor  
Coldwell Banker & Pacific

**Joe Rice**  
President & CEO  
Mid-Pacific Institute

**Mike Wood**  
Principal  
MW Group

**Linda Dooman**  
Community Volunteer

---

### Emeritus Members

**Craig Nakanishi**  
Rush Moore LLP

**Signe Godfrey**  
Olsten Staffing Services

---